

NEWSLETTER ELLIPTEC 07/2008

Dear Sir or Madame,

Welcome to the new issue of Elliptec's Newsletter, presenting updates on our piezoelectric drives and technologies.

For questions and comments, please feel free to contact us at newsletter@elliptec.com

Visit Elliptec's website at www.elliptec.com for further information, including application examples, or [contact us by phone](#).

Elliptec AG, Dortmund

Content:

- [1. Highly dynamic XY-stage using the Elliptec Motor X15G](#)
- [2. USB/RS232 Interface for Elliptec Modules](#)
- [3. New website launched](#)

1. Highly dynamic XY-stage using the Elliptec Motor X15G

The Elliptec Motor X15G combines high drive dynamics with high positioning accuracy and low manufacturing costs. The new Elliptec XY-stage benefits from these unique selling propositions. Two Elliptec Motors drive two linear sliders. They are backlash-free and coupled to a cross-slider that can be used for the highly dynamic XY-positioning of pipettes, electrodes or fibres. Depending on encoder resolution, step sizes of as little as 15µm may be achieved. The sliders move a distance of 1mm in approximately 5ms. The accessible work area of the current XY-stage model is 11.5 x 11.5 mm².

Due to these design parameters, 100 individual positions in a 10 x 10 mm² regular grid can be scanned in less than 1 second. That includes full stop and rest periods at each position. The unit is fully programmable so that the scan pattern, slider speeds and resting periods can be independently defined at every position.

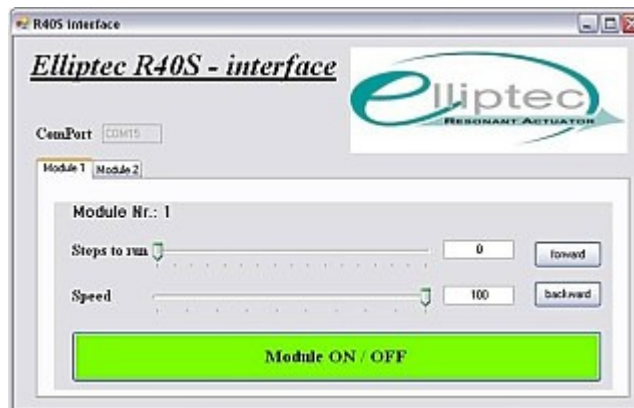


2. USB/RS232 Interface for Elliptec Modules

The Elliptec Module R40 combines an Elliptec Motor on a $\varnothing 20\text{mm}$ wheel, the complete driver electronics, and a position feedback system with a resolution of 1200 steps per revolution in a housing smaller than a match box. The embedded software turns the module into a conventional DC or a stepper motor while internally providing all the enhanced functionality of a piezoelectric motor, such as access to precise positioning algorithms.



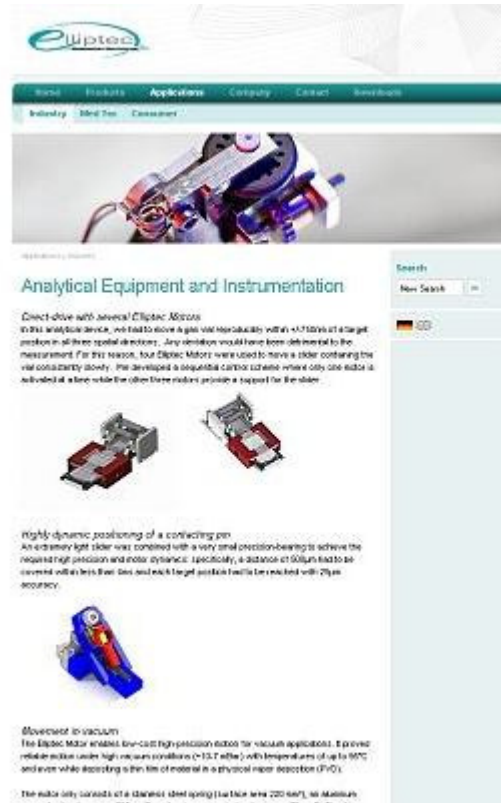
With the new USB/RS232 adapter, the Elliptec Module is easily controlled from a PC with minimal software. Customers can quickly develop, implement, and test their own driving algorithms.



3. New website launched

Elliptec has updated its web site <http://www.elliptec.com> and redesigned the layout with a contemporary, user-friendly look.

Prospective customers can quickly obtain relevant product information. Drive solutions for actual medical, industrial and consumer applications are provided under the 'Applications' tab. A password-protected service area contains CAD data, control software, circuit diagrams and further suggestions for rotational and linear drives. The login information is provided upon request to sales@elliptec.com.



If you would like to unsubscribe from this newsletter, simply reply to this email with "UNSUBSCRIBE" in the subject line, or click [here to automatically create the email message](#).

